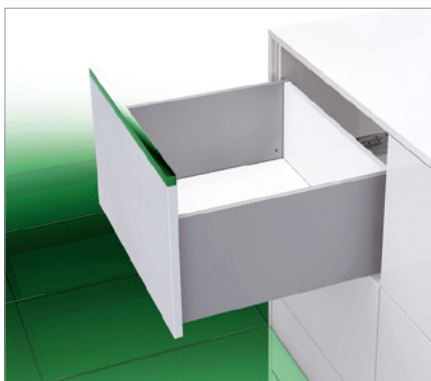


# VIONARO

## Pot drawer H249



- 4-dimensional adjustment
- Integrated side, height and tilt angle adjustment
- Depth adjustment is optional
- 90° straight interior and exterior sides
- Slim 13 mm drawer side width
- Tool-free front assembly
- Bottom panel machining not required
- Integrated front stabiliser for high fronts

### Packaging unit (PU):

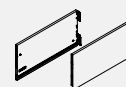
201 = 1 unit in cardboard box  
(smallest PU = 5 units)

207 = 10 units in a cardboard box

517 = 50 units in PE in a cardboard box

## ORDER INFORMATION

### 1 Vionaro drawer sides H249 Set: One left, one right



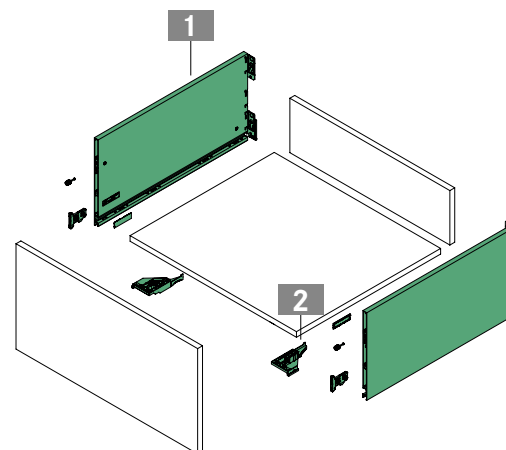
NL	Aluminium											
	Natural anodised			Silver grey			Graphite			Snow white		
	Art.-no.	PU		Art.-no.	PU		Art.-no.	PU		Art.-no.	PU	
450	F135106674	201	207	F135106774	201	207	F135106874	201	207	F135106974	201	207
500	F135106680	201	207	F135106780	201	207	F135106880	201	207	F135106980	201	207
550	F135106686	201	207	F135106786	201	207	F135106886	201	207	F135106986	201	207
600	F135106692	201	207	F135106792	201	207	F135106892	201	207	F135106992	201	207

### 2 Vionaro accessories for H185/H249 Set: Cover cap (inside), front locking device, front holder and front stabiliser, one of each left/right



	Description	Aluminium / Silver grey		Graphite		Snow white	
		Art.-no.	PU	Art.-no.	PU	Art.-no.	PU
	For screw fixing	F136100310	517	F136100312	517	F136100314	517
	Expansion dowel Ø 8 mm	F136100311	517	F136100313	517	F136100315	517

### Dynapro slides from page 28



## PAGE REFERENCES

Accessories – individual components	24	Divider railing	42	Assembly technology	72
Drawer sides with GRASS logo	26	Technical information	46	Assembly aids	76
Slides	28	Sensomatic	55	Packaging code	83

## PLANNING DIMENSIONS

All dimensions in millimetres

Front installation dimensions	Back panel installation dimensions	Cutting dimensions for 16 mm chipboard
<p>LWK RWB = LWK - 42 min. RWB = 120 mm</p> <p>min. 233</p> <p>249</p> <p>219</p> <p>Ø 8 x 13</p> <p>Ø 3.5 x 20</p> <p>Ø 8 x 13</p> <p>16</p> <p>96</p> <p>32</p> <p>31</p> <p>FST</p> <p>14.5</p> <p>FAS</p> <p>BB = LWK - 21</p> <p>min. 37</p> <p>28.5</p> <p>8.5</p> <p>15.5</p>	<p>10</p> <p>Ø 3.5 x 15</p> <p>32</p> <p>128</p> <p>31</p> <p>219</p> <p>16</p>	<p>RWB = LWK - 42</p> <p>RW</p> <p>219</p> <p>RWH</p> <p>B</p> <p>BL = NL - 11</p> <p>BB = LWK - 21</p>
Minimum installation depth	Screw connection, back panel (KB ≥ 275)	Screw connection, back panel (KB ≥ 600)
<p>37</p> <p>MET = NL + 3</p>	<p>Ø 3 x 40</p> <p>47</p> <p>47</p>	<p>Ø 3 x 40</p> <p>47</p> <p>47</p>
Fixing positions for full extension slide		
<p>KV</p> <p>18</p> <p>9</p> <p>23</p> <p>9</p> <p>10</p> <p>12</p> <p>28</p> <p>37</p> <p>450</p> <p>500</p> <p>550</p> <p>600</p> <p>4</p> <p>384</p> <p>352</p> <p>288</p> <p>256</p> <p>224</p> <p>192</p> <p>160</p> <p>128</p> <p>32</p> <p>0</p> <p>MET = NL + 3</p> <p>40 kg</p>	<div style="text-align: right;">             Euro screw Ø 6.3 x 14 mm              Chipboard screw Ø 4 x 16 mm              Screw head Ø 7 mm           </div> <p>KV</p> <p>10</p> <p>28</p> <p>37</p> <p>450</p> <p>500</p> <p>550</p> <p>600</p> <p>4</p> <p>384</p> <p>375</p> <p>352</p> <p>343</p> <p>288</p> <p>279</p> <p>247</p> <p>224</p> <p>128</p> <p>32</p> <p>0</p> <p>MET = NL + 3</p> <p>70 kg</p>	

## LEGEND

B/BB	Bottom panel/bottom panel width	KB	Cabinet width	NL	Nominal length
BL	Bottom panel length	KV	Front edge of cabinet	RW	Back panel
FAS	Front overlay, side	LWK	Inside cabinet width	RWB	Width of back panel
FST	Front overlay	MET	Minimum installation depth	RWH	Height of back panel